

HINGED SPLIT RING HANGERS

PLAIN, ELECTRO-GALVANIZED & COPPER

CERTIFICATION

TECHNICAL DATA



FOR INSTALL SUPPORT

sales@allfasteners.com



FOR SPECIFICATION SUPPORT

certs@allfasteners.com



FOR CUSTOMER SUPPORT

888.859.6060



HINGED SPLIT RING HANGERS

PLAIN, ELECTRO-GALVANIZED & COPPER

Hinged Split Ring Hangers are designed to provide secure suspension and support for stationary non-insulated pipe in overhead piping systems. Featuring a hinged design with a captive bolt and nut assembly, these hangers allow for quick installation and easy pipe positioning while maintaining reliable support.

They can be used for both vertical and horizontal applications. They are made of malleable iron and are available in plain steel, electro-galvanized & copper finishes.



KEY BENEFITS

- Hinged design allows for fast and easy installation
- Captive bolt and nut prevent lost hardware during assembly
- Provides secure support for stationary pipe systems
- Available in multiple finishes to suit application requirements
- Suitable for a wide range of pipe sizes
- Durable construction for long-term performance
- Simplifies maintenance and pipe replacement when required

APPLICATIONS

- Mechanical piping systems
- Plumbing installations
- HVAC piping support
- Water distribution systems
- Fire protection piping
- Commercial and industrial facilities
- Equipment room and plant piping
- General overhead pipe suspension

MATERIAL SPECIFICATIONS

TABLE 1: MATERIAL SPECIFICATIONS OF HINGED SPLIT RING HANGERS PLAIN & ELECTRO-GALVANIZED

MATERIAL/FINISH	Plain Malleable Iron Electro-Galvanized Chrome Plated
VARIANTS	N/a
SERVICE	Designed for the suspension of non-insulated stationary pipe lines horizontally or vertically.
APPROVALS	Complies with Federal Specification WWH-171-E (Type# 25), AA-1192A (Type# 12), Manufacturers' Standardization Society SP-58 and MSS SP-69 (Type# 12)
NOTES	N/a

TABLE 2: MATERIAL SPECIFICATIONS OF HINGED SPLIT RING HANGERS COPPER

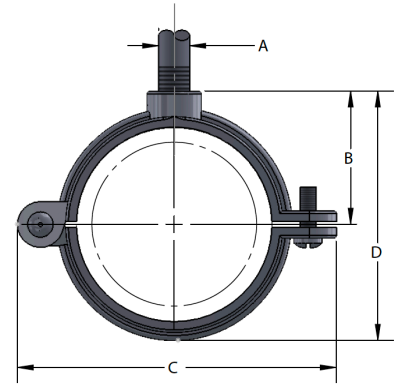
MATERIAL/FINISH	Copper epoxy coated Malleable Iron
VARIANTS	N/a
SERVICE	Designed for the suspension of non-insulated stationary pipe lines horizontally or vertically.
APPROVALS	Complies with Federal Specification WWH-171-E (Type# 25), AA-1192A (Type# 12), Manufacturers' Standardization Society SP-58 and MSS SP-69 (Type# 12)
NOTES	Copper epoxy products offer superior corrosion protection due to the epoxy coating over electro-galvanized material. The alternative copper plating that has been done historically identifies the product and is not intended for protection. Refer to MSS SP58, 13.3.

**HINGED SPLIT RING HANGERS**

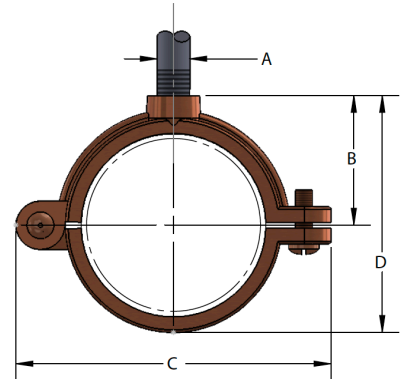
PLAIN, ELECTRO-GALVANIZED & COPPER

DIMENSIONAL DATA**TABLE 3: DIMENSIONAL DATA OF HINGED SPLIT RING HANGERS PLAIN & ELECTRO-GALV.**

PIPE SIZE (in.)	PIPE O.D. (in.)	SCREW	A	B	C	D	WGT EACH (lbs.)	MAX REC LOAD (lbs.)
3/8	0.675	10-24	3/8-16	11/16	1-13/16	1-3/16	0.084	180
1/2	0.840	10-24	3/8-16	3/4	2-1/8	1-3/16	0.098	180
3/4	1.050	10-24	3/8-16	7/8	2-1/2	1-9/16	0.112	180
1	1.315	10-24	3/8-16	1-1/8	2-3/4	2	0.147	180
1-1/4	1.660	10-24	3/8-16	1-5/16	3-3/16	2-3/8	0.181	180
1-1/2	1.900	10-24	3/8-16	1-7/16	3-3/8	2-5/8	0.214	180
2	2.375	10-24	3/8-16	1-5/8	3-15/16	3-1/16	0.299	180
2-1/2	2.875	1/4	1/2-13	2-1/8	5-3/16	3-13/16	0.583	300
3	3.500	1/4	1/2-13	2-1/2	5-11/16	4-5/8	0.713	300
4	4.500	1/4	1/2-13	2-7/8	6-3/4	5-9/16	1.019	300

**TABLE 4: DIMENSIONAL DATA OF HINGED SPLIT RING HANGERS COPPER**

PIPE SIZE (in.)	PIPE O.D. (in.)	SCREW	A	B	C	D	WGT EACH (lbs.)	MAX REC LOAD (lbs.)
1/4	0.375	10-24	3/8-16	9/16	1-3/4	7/8	0.073	180
3/8	0.500	10-24	3/8-16	5/8	1-3/4	1-1/16	0.080	180
1/2	0.625	10-24	3/8-16	11/16	1-7/8	1-3/16	0.084	180
3/4	0.875	10-24	3/8-16	1-3/16	2-5/16	1-7/16	0.106	180
1	1.125	10-24	3/8-16	1-5/16	2-7/16	1-5/8	0.122	180
1-1/4	1.375	10-24	3/8-16	1-1/6	2-13/16	1-15/16	0.152	180
1-1/2	1.625	10-24	3/8-16	1-3/16	3-1/16	2-3/16	0.172	180
2	2.125	10-24	3/8-16	1-7/16	3-5/8	2-11/16	0.233	180
2-1/2	2.625	1/4	1/2-13	1-7/8	4-15/16	2-7/16	0.449	300
3	3.125	1/4	1/2-13	2-1/8	5-1/2	4-1/16	0.663	300
4	4.125	1/4	1/2-13	2-5/8	6-5/8	5-1/16	0.753	300



**HINGED SPLIT RING HANGERS**

PLAIN, ELECTRO-GALVANIZED & COPPER

ORDERING INFORMATION**TABLE 5: ORDERING INFORMATION OF HINGED SPLIT RING HANGERS PLAIN**

PART NUMBER	PIPE SIZE	FINISH	QTY/BOX
6SHPL0100	1"	Plain	100
6SHPL0200	2"	Plain	50
6SHPL0300	3"	Plain	50

TABLE 6: ORDERING INFORMATION OF HINGED SPLIT RING HANGERS ELECTRO-GALVANIZED

PART NUMBER	PIPE SIZE	FINISH	QTY/BOX
6SHGV0012	1/2"	Electro-Galvanized	100
6SHGV0034	3/4"	Electro-Galvanized	100
6SHGV0100	1"	Electro-Galvanized	100
6SHGV0114	1-1/4"	Electro-Galvanized	50
6SHGV0112	1-1/2"	Electro-Galvanized	50
6SHGV0200	2"	Electro-Galvanized	50
6SHGV0212	2-1/2"	Electro-Galvanized	50
6SHGV0300	3"	Electro-Galvanized	50
6SHGV0400	4"	Electro-Galvanized	25

TABLE 7: ORDERING INFORMATION OF HINGED SPLIT RING HANGERS COPPER

PART NUMBER	PIPE SIZE	FINISH	QTY/BOX
6SHCP0012	1/2"	Copper Epoxy	100
6SHCP0034	3/4"	Copper Epoxy	100
6SHCP0100	1"	Copper Epoxy	100
6SHCP0114	1-1/4"	Copper Epoxy	50
6SHCP0112	1-1/2"	Copper Epoxy	50
6SHCP0200	2"	Copper Epoxy	50
6SHCP0212	2-1/2"	Copper Epoxy	50